

# QALCOSONIC E4 METER WITH GAME CHANGING PRICE IN HEAT AND COOLING MARKET



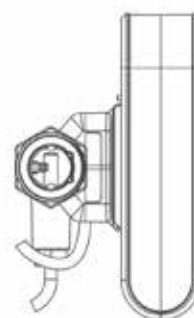
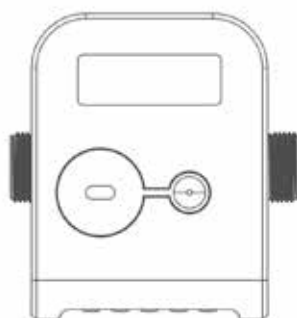
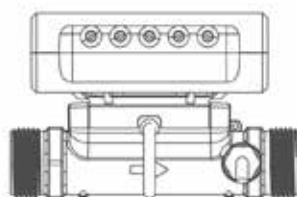
**VWV metering** is het platform waarop wij onze producten aanbieden. VWV metering biedt een ruim scala aan meters en toebehoren. Centraal hierbij staan het leveren en plaatsen van oplossingen waarbij draadloos en op afstand uitlezen en monitoren van meterstanden mogelijk wordt gemaakt. De oplossingen zijn uiterst flexibel en schaalbaar; en of het nu gaat om 20 dan wel 2000 verbruikers, VWV metering heeft een pasklare formule om in de gegeven omstandigheden tegemoet te komen aan de meest specifieke wensen van de klant. Wij kunnen daarom ook referenties voorleggen van verenigingen van eigenaren, syndicussen, woningbouwverenigingen tot en met energiebedrijven. **T.** +31 (0) 182 640 775 - **E.** [service@vwvmetering.nl](mailto:service@vwvmetering.nl)

WE ADAPT TO THE  
GROWING DEMANDS FROM  
OUR CLIENTS AND PROVIDE  
THE CHANCE TO GET THE  
METER WITH THE LATEST  
COMMUNICATION TOOLS.

## NEW COMPOSITE BODY

The meter can communicate via all most popular communication protocols like M-Bus, WMBus, Modbus, Bacnet, LoRa with your gateways and data loggers with dual or even triple communication in same time. This allows you not only to enjoy meter communication with most advanced LoRa IoT means of communication, but in the same time to have in meter additional communication for older infrastructure, like M-Bus, WMBus or Modbus/Bacnet.

**For the same price**, you will receive the added value, as the meter quickly informs you about any glitch (leakages, broken pipes, etc.). The self-diagnostic function in the new meter provides information on the status of the meter simply and easily.



## E4 VALUES



### FUNCTIONALITY

- The meter induces all notifications extremely quickly, when the heating/cooling system is messy or unaltered.
- Multiple communication technologies integrated, which allows to optimize your investments and costs.
- The extensive archive of internal data allows to track the history of usage and failures within the meter.
- Due to the LCD screen (with additional status, malfunction, flow symbols) all users have a convenient information stream ensured.
- The meter is convenient to configure through the use of a special button, optical communication interface or mobile application right in the location of installation.
- The meter does not react to external magnetic fields. This feature not only reduces commercial losses, but also prevents human mistakes.
- The meter has R100 and R250 dynamic ranges, so both small and large heat carrier flows can be estimated 100% accurately.
- For the unlimited and frequent meter reading, a separate external power source with backup battery can be used. It can be necessary in case the external feeding has disappeared, but meter will continue working.

### MATERIALS



- The composite body, installed in the meter, is a new generation device which works especially accurately.
- The battery of this meter works up to 16 years (the final lifetime depends on the selected way of data transmission).
- Due to the meter structure, based on the latest technology, it does not react to contaminated water. Therefore, no periodic calibration is required.
- The labeling of this meter is especially flexible and adaptable to the needs of any client.
- Your transport costs will be reduced with a composite body which has similar mechanical features as a brass body.

### ASSEMBLING



Quicker and easier installation of the meter due to many convenient functions:

- Supply/return lines according to user needs configurable on installation site.
- The meter may be produced in IP65/IP67/IP68 environment protective class. Therefore, it can be used in different environment conditions.
- The part of the flow is detached from the electronic unit.
- Choice of either vertical or horizontal position.

# VOLLEDIG GRIP OP UW EIGEN METERPARK MET ONERGY

VOOR HET ACTUELE UITLEZEN VAN ALLE  
METERSTANDEN OP AFSTAND

De ervaring is dat woningbouwverenigingen, exploitanten, VvE's, vastgoedbeheerders, de volledige grip willen houden op hun meterpark. Er is meer en meer behoefte om dagelijks, wekelijks, maandelijks, niet alleen inzage te krijgen in de verbruiken maar bv. ook automatische meldingen te krijgen van eventuele storingen enz. Dit alles zonder afhankelijk te zijn van het betreffende meetbedrijf die de meetapparatuur geleverd heeft. Het ONERGY-platform kan dan ook alle meters inlezen en automatisch rapporteren onafhankelijk van het meterfabricaat.



HET ONERGY PLATFORM  
ZOVEEL MEER DAN HET METEN  
VAN VERBRUIK ALLEEN.

**VWV metering**

Hoge Ham 89 A - 5104 JC Dongen

**T.** +31 (0) 182 640 775

**E.** [service@vwvgroup.nl](mailto:service@vwvgroup.nl)

**VWV België**

Fr. Rooseveltlaan 349 - 9000 Gent

**T.** +32 (0) 9 265 02 72

**E.** [service@vwvgroup.be](mailto:service@vwvgroup.be)

**VWV GROUP**

VWV kostenverdeling

VWV de energieboekhouders

VWV metering